

# Dura Mat



MATS

Pile content	Polmaterial	Poids des fibres	100% synthetic
Surface aspect	Oberflächenstruktur	Aspect du surface	Rib
Backing	Rücken	Dossier	PVC
Pile weight	Pile weight	Pile weight	790 gr/m <sup>2</sup>
Total weight	Gesamtgewicht	Poids total	3290 gr/m <sup>2</sup>
Pile height	Polhöhe	Hauteur du velours	3,5 mm
Total height	Gesamthöhe	Hauteur totale	6,5 mm
Dimensions	Abmessungen	Dimensions	40 x 60 cm 50 x 80 cm 66 x 120 cm 66 x 185 cm 100 x 120 cm 100 x 150 cm 150 x 180 cm

CE

EN 14041  
EN 1307

A division of Beaulieu International Group  
BFS Europe NV, Groenedreef 15A, 9770 Kruisem  
Showroom: Ingelmunstersteenweg 162, 8780 Oostrozebeke  
T +32 56 67 22 11 // F +32 56 66 87 45  
Sales.BFSEurope@bintg.com  
[www.beaulieu-needlefelt.com](http://www.beaulieu-needlefelt.com)

Colours may slightly vary from batch to batch. Weight and height can vary +/-10% due to limitations of the manufacturing process. We reserve the right to alter technical specifications.  
© Beaulieu International Group

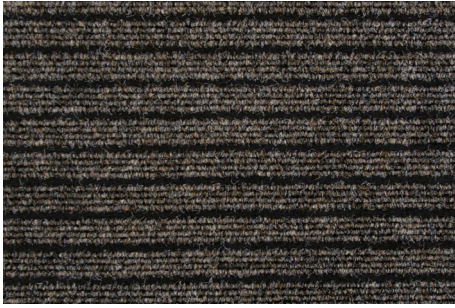
ISO 9001:2015 certified



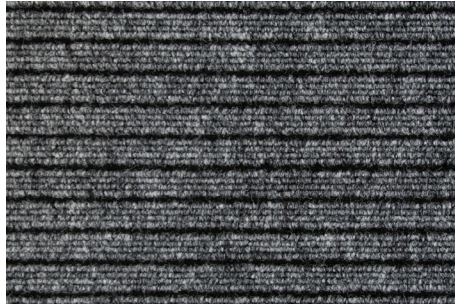
Beaulieu  
International  
Group

Needle Felt

# Dura Mat



1861  
Beige



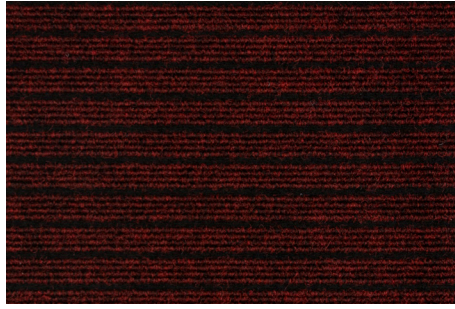
2862  
Grey



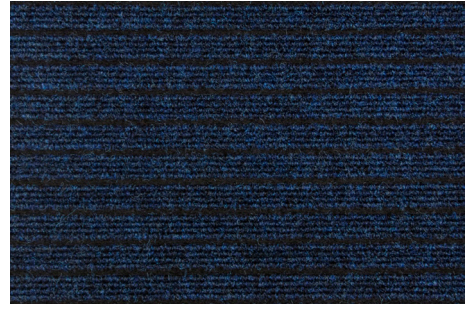
2868  
Antra



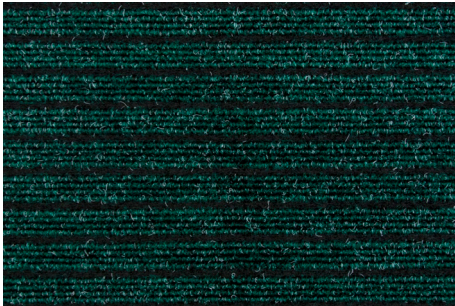
7869  
Brown



3879  
Red



5880  
Blue



6883  
Green